

(LIGHT in DARKNESS) iwto project-concept & innovation
category

Concept and main idea: to experience with wool and luminescent textile materials simultaneously to take advantage of the qualities of the fiber wool adding an innovative element: the light

By Marina Castán Cabrero

(LIGHT in DARKNESS)

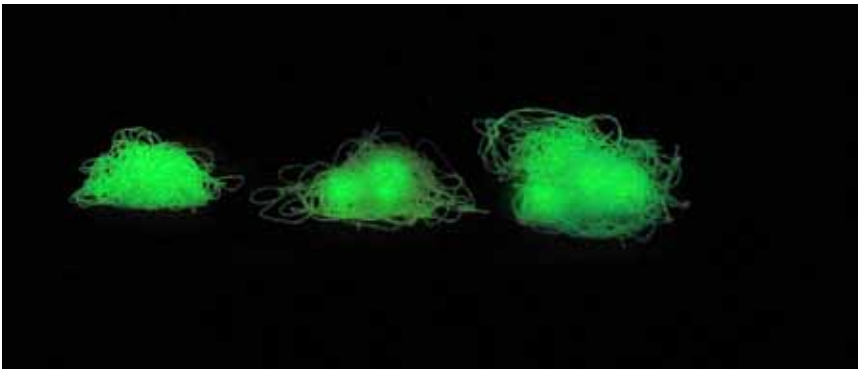
materials



- Product made in felting wool 100%, tape format, fluorescent and phosphorescent continuous filaments of polyester and polyamide and yarns in tape of wool and acrylic.
- Phosphorescent continuous filament cone

(*LIGHT* in *DARKNESS*)

materials



- Fluorescent and phosphorescent filaments.
- The fluorescent yarns has a finishing treatment that relies on the impregnation of a solution with a fluorescent base by which textiles can emit light when struck by the ultraviolet rays of the sun.
- Its composition is: 86% Pes, 14% Pa

(*LIGHT* in *DARKNESS*)

luminiscent effect experimentation

DAY LIGHT



minus

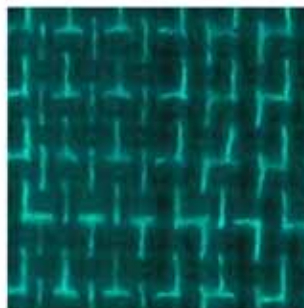


medium

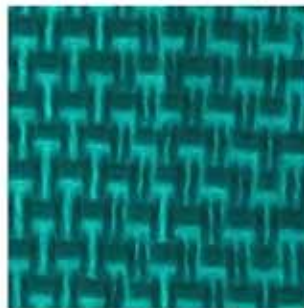


plus

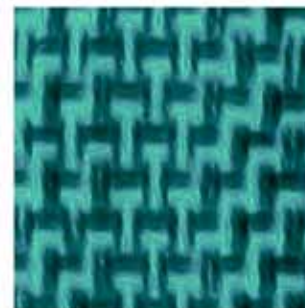
DARKNESS



minus



medium



plus

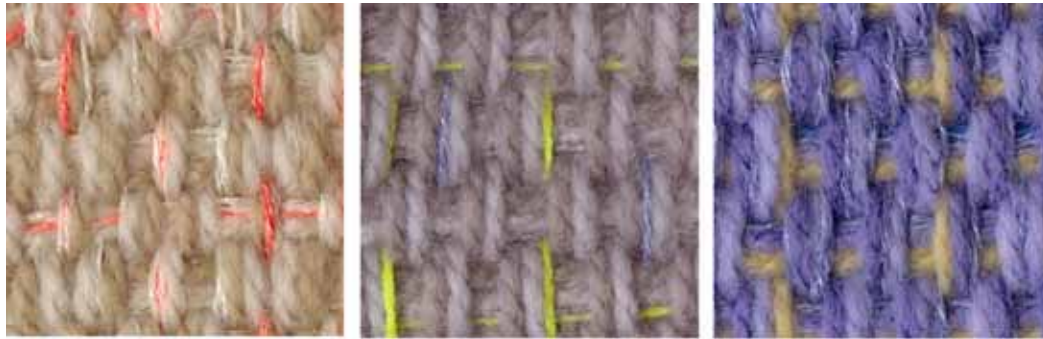
1. Bidirectional effect:

- Phosphorescent yarns in both senses (warp and plots) combined with yarns of 100% wool.
- Creation of three types of weave to experience light gradients.

- Minus makes reference to the minimum degree of light, Medium to the light degree average and Plus to the degree of maximum light

(*LIGHT* in *DARKNESS*)

colour experimentation



- dyes of wool yarn, fluorescent and phosphorescent filaments



- The different chromatic mixtures obtained allows a metamorphosis of the light and the color depending on the type of light

(LIGHT in DARKNESS)

bidirectional effect /process



- Use of the felting wool in tape format to provide volume and dimensional stability to the weave.
- The felting wool tape works as support of the fluorescent and phosphorescent effects

(*LIGHT* in *DARKNESS*)

process



- Yarn in chain stitch form (40% Wm, 60% Pan) to catch felting wool tapes
- It provides an original texture to the weave and a pleasant touch

(*LIGHT* in *DARKNESS*)

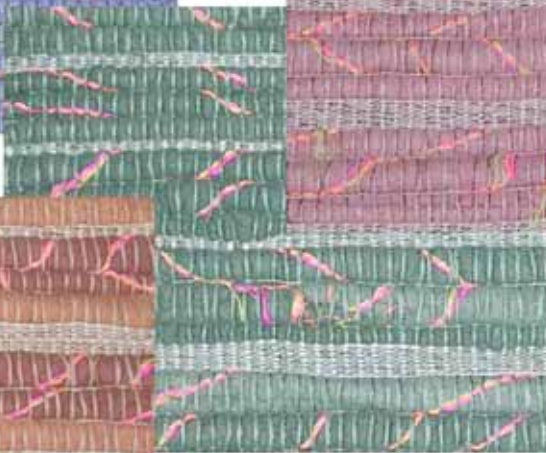
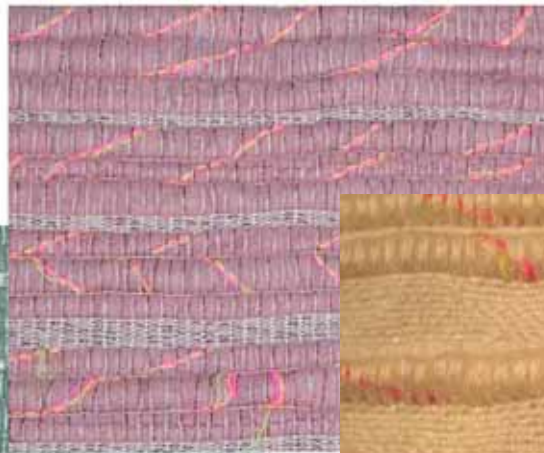
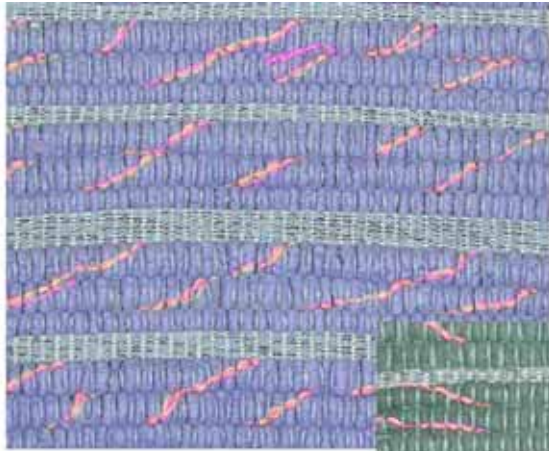
fabric design



- 2. Undirectional luminescent effect
- Taffeta weave inserting fluorescent and phosphorescent filaments in one sense (plots) supported by tape felting wool 100% and a mixed chain stitch.

(LIGHT in DARKNESS)

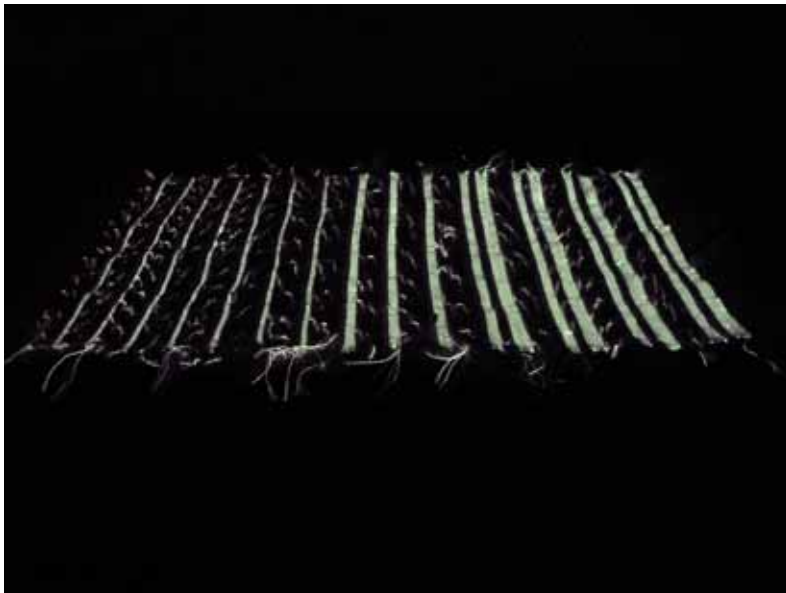
colour card



(*LIGHT* in *DARKNESS*)

application

- Applications in private interiors but also public
- Due to his rustic texture and its technological function it combines two opposed but complementary factors: tradition and technology



- The idea to use the light on a textile destined to cover grounds equips the product with an added value: the functionality of the light in the spaces: signposting and support (psychic well-being)

(*LIGHT* in *DARKNESS*)

consumer

benefits for the final

- The light grants **value added** to the product contributing functionalities of signposting and well-being
- The wool properties are ideal for a product in the scope of the textile home because:
 - Does not load statically
 - Good resilience properties
 - Excellent resistance to the flame
 - Does not produce allergies
 - Provides volume
 - Its capacity of felting gives to the weave the dimensional stability
 - the luminescent properties provide a functionality extra creating datum points in the spaces and contributing to the psychic well-being
 - In addition in the case to the children it works like playful element and railing during the night

(LIGHT in DARKNESS)

industry

benefits for the wool

- It widely reaffirms the consolidated use of the fiber of the wool for applications in the scope of the textile home, concretely in carpets
- It takes advantage of the qualities volume, resistance, dimensional stability and resilience that turn it favorite for the insertion of luminescent textile material destined to cover grounds
- The combination of wool and light provides one renewed vision (tradition & technologie) of the fiber of the wool